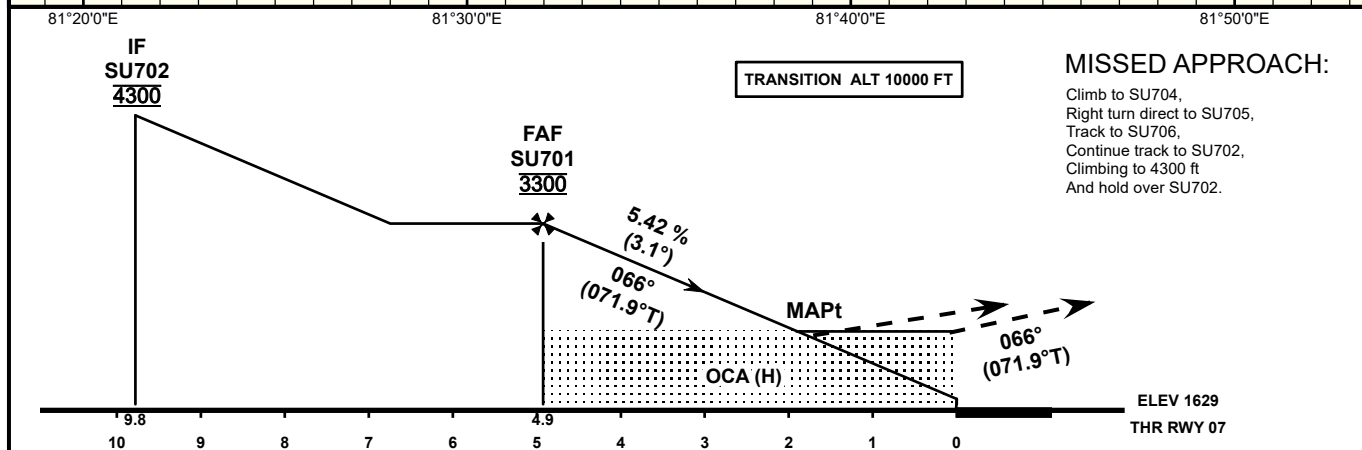
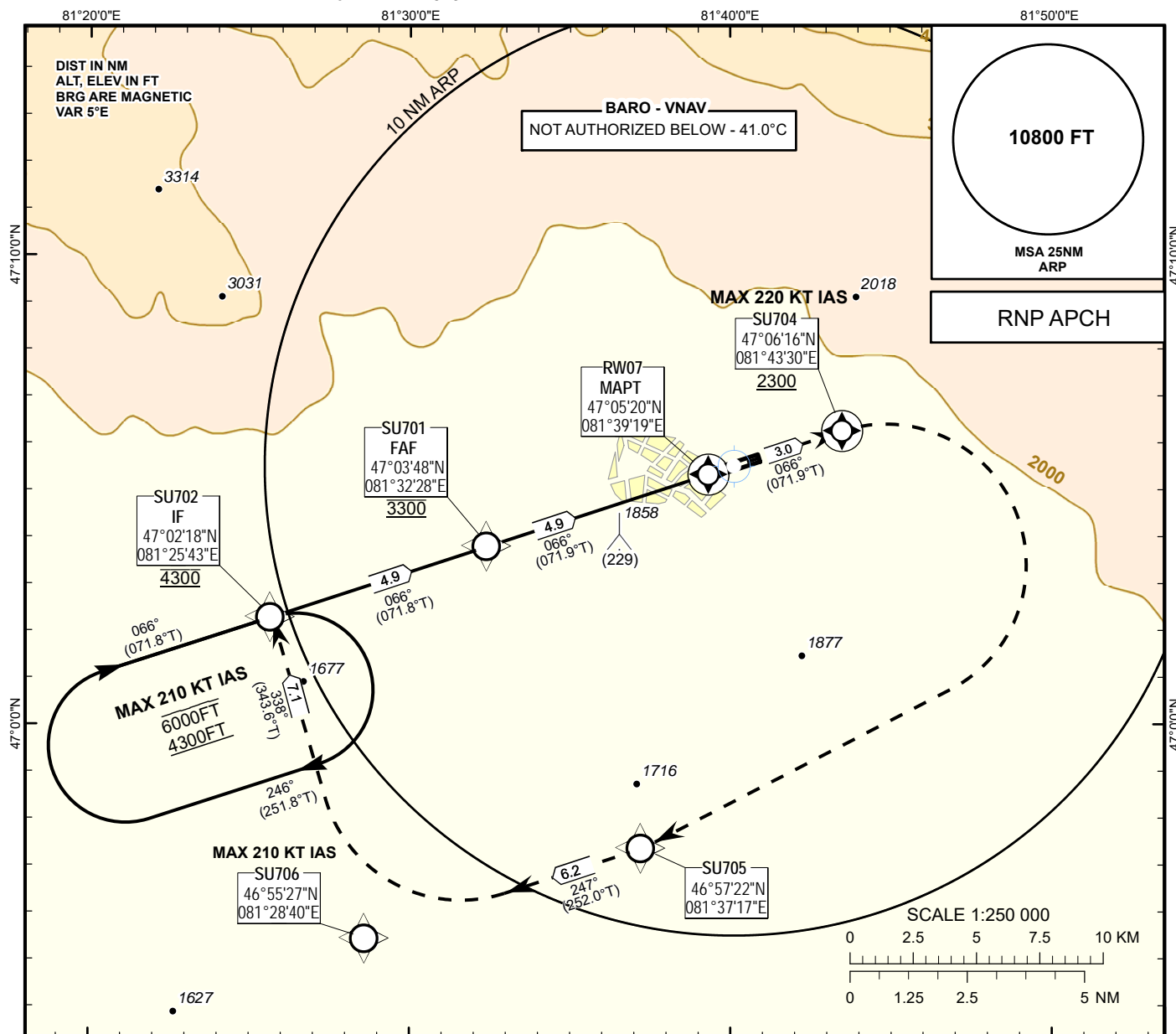


INSTRUMENT
APPROACH
CHART - ICAO

AERODROME ELEV **1702FT**
HEIGHTS RELATED TO
THR RWY 07 - ELEV **1629FT**

URDZHAR TOWER 123.0

URDZHAR
RNP RWY 07



OCA(OCH)		A	B	C
Straight	LNAV	2110(480)		
	LNAV/VNAV	1990(361)	2000(371)	2010(381)

DIST THR	4	3	2	1
ALTITUDE	3000	2670	2340	2010
HEIGHT	1371	1041	711	381

GS	kt	80	100	120	140	160	180
Rate of descent	ft/min	440	450	660	770	880	990
FAF/FAP - THR (4.9 NM)	min:s	3:42	2:57	2:28	2:07	1:51	1:39

CHANGE: New chart.

TABULAR DESCRIPTION

RNP RWY07											
Serial Number	Path Descriptor	Waypoint Identifier	Fly - over	Course °M(°T)	Magnetic Variation(°)	Distance (NM)	Turn Direction	Altitude (FT)	Speed (KT)	VPA (°)	Navigation Specification
010	IF	-	-	-	+5.4	-	-	@4300	-	-	RNP APCH
020	TF	SU701	-	066(071.8)	+5.4	4.9	-	@3300	-	-	RNP APCH
030	TF	RW07	Y	066(071.9)	+5.4	4.9	-	@1678	-	-3.1	RNP APCH
040	CF	SU704	Y	066(071.9)	+5.4	3.0	-	+2300	-220	+1.4	RNP APCH
050	DF	SU705	-	-	+5.4	-	R	-	-	+1.4	RNP APCH
060	TF	SU706	-	247(252.0)	+5.4	6.2	R	-	-210	+1.4	RNP APCH
070	TF	SU702	-	338(343.6)	+5.4	7.1	R	@4300	-210	+1.4	RNP APCH
080	HM	SU702		066(071.8)	+5.4	5.0	R	+4300/-6000	-210		RNP APCH

WAYPOINT COORDINATES

RNP RWY07			
Waypoint Identifier		Coordinates	
SU701		470348.38N	0813227.89E
SU702		470217.52N	0812542.98E
RW07		470520.15N	0813919.04E
SU704		470615.85N	0814329.66E
SU705		465722.17N	0813716.69E
SU706		465526.83N	0812839.99E